

**3**

**MANUAL**

**EDILGRAPPA**

**SILVERCUT 20  
ELECTRIC SHEAR  
SPARE PARTS**

**INDEX**

<b>0 SPARE PARTS AND ACCESSORIES CATALOGUE .....</b>	<b>3</b>
0.01 ORDERING INFORMATION.....	3
0.02 MECHANICAL AND ELECTRICAL COMPONENTS.....	3
<b>COMPONENTS OF SILVERCUT 20 ELECTRIC SHEAR.....</b>	<b>4</b>
<b>P/N 1.50.1300.....</b>	<b>4</b>

## 0 SPARE PARTS AND ACCESSORIES CATALOGUE



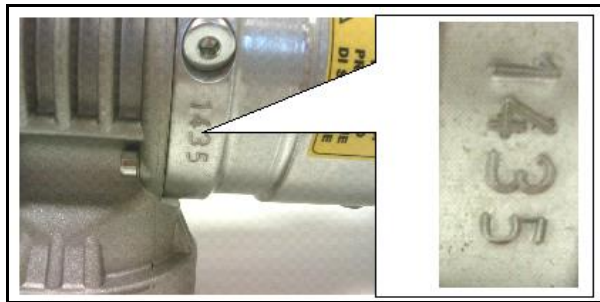
**THE COMPANY DECLINES ALL LIABILITY FOR INJURY TO PEOPLE OR DAMAGE TO PROPERTY IF TECHNICAL ASSISTANCE IS NOT PERFORMED BY QUALIFIED AND AUTHORISED STAFF.**



**FOR TECHNICAL ASSISTANCE AND MAINTENANCE, CONTACT AN AUTHORISED SERVICE CENTRE OR WRITE TO [cut@edilgrappa.com](mailto:cut@edilgrappa.com).**

### 0.01 ORDERING INFORMATION

For technical assistance and spare parts, both during and after the period of warranty, quote the data indicated on the ID plates and the serial number punched on the tool body (fig. 1)



**Fig. 1**

Orders for spare parts must be accompanied by the following information:

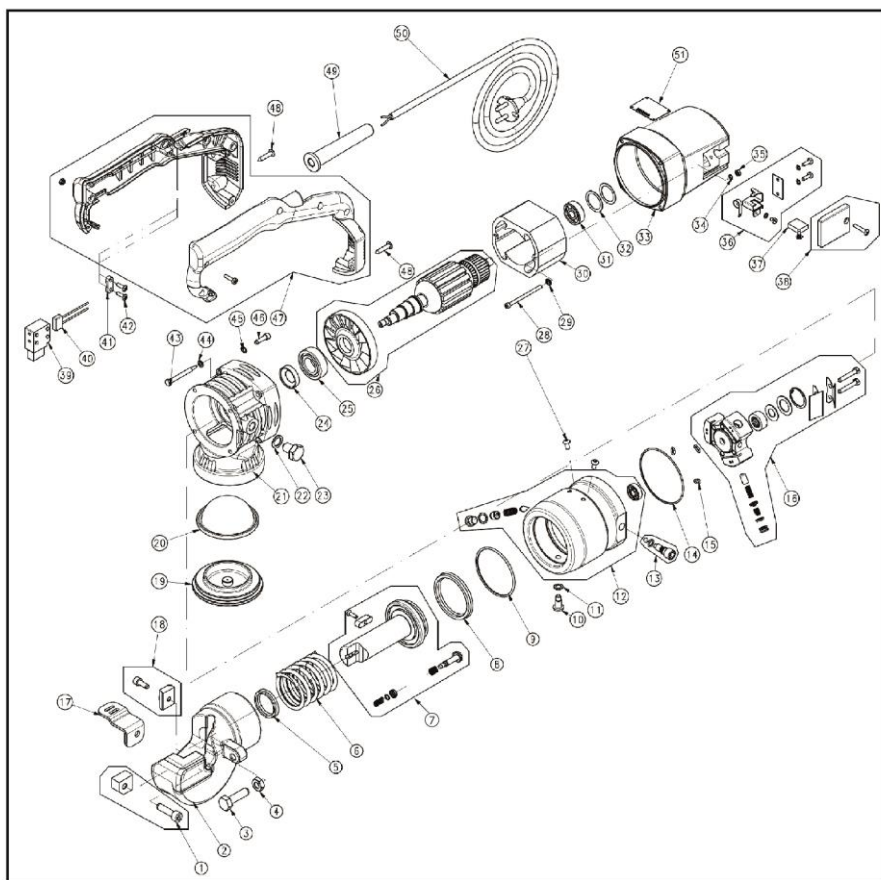
1. Type of equipment
2. Serial number
3. Part number or position in exploded drawing
4. Quantity
5. Revision status indicated on the back cover of the manual.

The Manufacturer can only supply the appropriate spare part if the required data is complete, since subsequent improvements may have entailed structural variations to the equipment and therefore to the spare parts.

### 0.02 MECHANICAL AND ELECTRICAL COMPONENTS

The following page contains an exploded diagram of the machine, complete with the part numbers, descriptions and quantities of each component

COMPONENTS OF SILVERCUT 20 ELECTRIC SHEAR  
P/N 1.50.1300



**COMPONENTS OF SILVERCUT 20 ELECTRIC SHEAR**  
**P/N 1.50.1300**

Pos.	P/N	Item	Q.ty
1	1.50.1393	FIXED BLADE ASSEMBLY WITH SCREWS	1
2	1.10.3901	HEAD	1
3	1.60.754	SCREW	1
4	1.60.237	NUT	1
5	1.30.515	GASKET	1
6	1.10.4059	PISTON RETURN SPRING	1
7	1.50.1338	PISTON ASSEMBLY	1
8	1.30.504	GASKET	1
9	1.30.506	O-RING	1
10	1.10.4073	HEAD LOCK SCREW	1
11	1.70.006	COPPER WASHER	1
12	1.50.1395	CYLINDER ASSEMBLY	1
13	1.50.1917	MANUAL RETURN VALVE	1
14	1.30.046	O-RING	1
15	1.30.017	O-RING	3
16	1.50.511	PUMP ASSEMBLY	1
17	1.10.4539	FIXED BLADE GUARD	1
18	1.50.1394	MOVING BLADE ASSEMBLY WITH SCREWS	1
19	1.10.1726	TANK COVER	1
20	1.30.276	MEMBRANE	1
21	1.10.1725	OIL TANK	1
22	1.60.337	GASKET	1
23	1.50.506	MAGNETIC CAP	1
24	1.60.014	OIL GUARD	1
25	1.60.013	BEARING	1
26	200.009	ROTOR ASSEMBLY WITH FAN	1
27	1.60.937	SCREW	2
28	1.60.142	SCREW	2
29	1.60.382	TOOTHED WASHER	2
30	1.40.016	STATOR STACK	1
31	1.60.003	BEARING	1

<b>Pos.</b>	<b>P/N</b>	<b>Item</b>	<b>Q.ty</b>
32	1.60.324	ADJUSTING RING	2
33	1.30.034G	MOTOR COVER	1
34	1.10.811	WASHER	2
35	1 60 207	NUT	2
36	1.50.1936	BRUSH HOLDER KIT	1
37	1.30.005	MOTOR BRUSH	1
38	1.50.1391	BRUSH COVER ASSEMBLY	1
39	1.40.020	SWITCH	1
40	1.40.002	ANTI-DISTURBANCE FILTER	1
41	1.30.020	PLASTIC CABLE CLAMP	1
42	1.60.129	SELF-TAPPING SCREW	2
43	1.60.151	SELF-TAPPING SCREW	4
44	1.60.314	WASHER	4
45	1.60.410	WASHER	4
46	1.60.3021	SCREW	4
47	1.50.1387	HALF-SHELL ASSEMBLY WITH SCREWS	1
48	1.60.147	SELF-TAPPING SCREW	4
49	1.30.021	CABLE HOLDER	1
50	1.40.012	CABLE WITH PLUG	1
51	1.90.127	CE LABEL	1

**NOTES**

**EDILGRAPPA** Srl  
**MACHINES AND EQUIPMENT FOR THE BUILDING TRADE,  
INDUSTRY AND RESCUE**

31030 BORSO DEL GRAPPA (TV) - ITALY - Via Callesello, 4  
Tel. 0423 910122 – Telefax 0423 542122

E-mail: [cut@edilgrappa.com](mailto:cut@edilgrappa.com)    <http://www.edilgrappa.com>