

3

MANUAL

EDILGRAPPA

BENDING TOOL

MU16P

SPARE PARTS

INDEX

0 SPARE PARTS AND ACCESSORIES CATALOGUE..... 3

 0.01 ORDERING INFORMATION..... 3

 0.02 MECHANICAL AND ELECTRICAL COMPONENTS..... 3

COMPONENTS OF BENDING TOOL P/N 1.50.1100 4

0 SPARE PARTS AND ACCESSORIES CATALOGUE



THE COMPANY DECLINES ALL LIABILITY FOR INJURY TO PEOPLE OR DAMAGE TO PROPERTY IF TECHNICAL ASSISTANCE IS NOT PERFORMED BY QUALIFIED AND AUTHORISED STAFF.



FOR TECHNICAL ASSISTANCE AND MAINTENANCE, CONTACT AN AUTHORISED SERVICE CENTRE OR WRITE TO cut@edilgrappa.com.

0.01 ORDERING INFORMATION

For technical assistance and spare parts, both during and after the period of warranty, quote the data indicated on the ID plates and the serial number punched on the tool body (fig. 1)

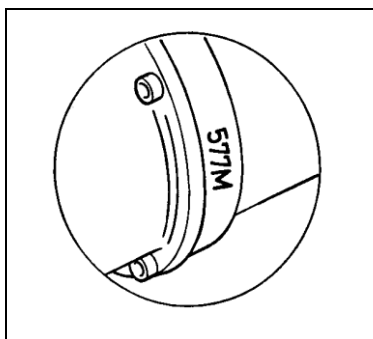


Fig.1

Orders for spare parts must be accompanied by the following information:

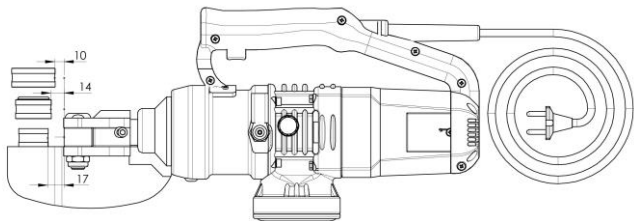
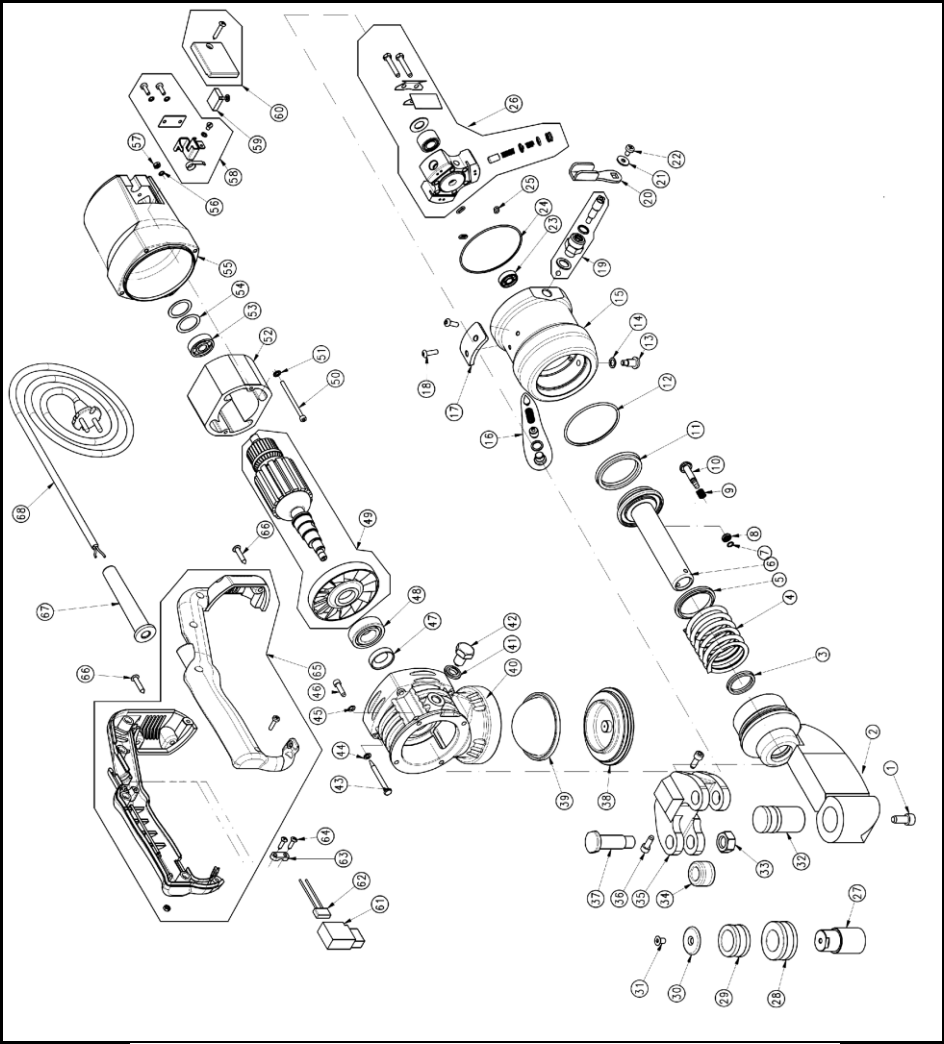
1. Type of equipment
2. Serial number
3. Part number and position in exploded drawing
4. Quantity
5. Revision status indicated on the back cover of the manual.

The Manufacturer can only supply the appropriate spare part if the required data is complete, since subsequent improvements may have entailed structural variations to the equipment and therefore to the spare parts.

0.02 MECHANICAL AND ELECTRICAL COMPONENTS

The following page contains an exploded diagram of the machine, complete with the part numbers, descriptions and quantities of each component

COMPONENTS OF BENDING TOOL P/N 1.50.1100



COMPONENTS OF BENDING TOOL P/N 1.50.1100

Pos.	P/N	Rev.	Item	Q.ty
1	1 60 110	0	SCREW	1
2	1.50.1099	6	WELDED HEAD ASSEMBLY	1
3	1.30.070	0	GASKET	1
4	1.10.4059	0	PISTON RETURN SPRING	1
5	1.10.4226	0	SPRING HOUSING RING	1
6	1.10.4079	2	PISTON	1
7	1.60.306	1	RETAINING RING	1
8	1.10.238	0	UPPER SPRING LOCK NUT	1
9	1.10.196	0	SPRING	1
10	1.10.237	3	MANUAL RETURN VALVE (VALVE ASSEMBLY)	1
11	1.30.032	0	GASKET	1
12	1.30.506	1	O-RING	1
13	1.10.4073	2	HEAD LOCK SCREW	1
14	1.70.006	0	COPPER WASHER	1
15	1.10.4078	6	CYLINDER	1
16	1.50.1912	0	CALIBRATION VALVE	1
17	1.10.4844	2	HANDLE LOCK SHIM	1
18	1.60.940	1	SCREW	2
19	1.50.1932	0	MANUAL RETURN VALVE (VALVE ASSEMBLY)	1
20	1.10.4241	1	MANUAL VALVE LEVER	1
21	1.60.702	0	WASHER	1
22	1.60.139	1	SCREW	1
23	1.60.068	1	BEARING	1
24	1.30.046	2	O-RING	1
25	1.30.017	2	O-RING	3
26	1.50.511	2	PUMP ASSEMBLY	1
27	1.10.3328	0	PIN FOR 8-12 MM ROD	1
28	1.10.3335	1	RING/CAM FOR 8/10 MM ROD	1
29	1.10.3333	1	RING/CAM FOR 12/14 MM ROD	1
30	1.10.3319	0	FOLD RING LOCK WASHER	1
31	1.60.118	0	SCREW	1
32	1.10.3331	2	PIN FOR 14-16 MM ROD	1
33	1 60 220	0	NUT	2
34	1.10.3330	1	THRUST ROLLER	2

Pos.	P/N	Rev.	Item	Q.ty
35	1.10.3329	5	MOBILE FOLD ROLLER SUPPORT	1
36	1 60 103	0	SCREW	2
37	1.10.3332	0	ROLLER LOCK PIN	2
38	1.10.1726	2	TANK COVER	1
39	1.30.276	1	MEMBRANE	1
40	1.10.1725	4	OIL TANK	1
41	1.60.337	2	BONDED SEAL WASHER	1
42	1.50.506	2	MAGNETIC CAP	1
43	1.60.151	1	SELF-TAPPING SCREW	4
44	1.60.314	0	SPRING WASHER	4
45	1.60.410	0	WASHER	4
46	1.60.3021	0	SCREW	4
47	1.60.014	0	OIL GUARD	1
48	1.60.013	2	BEARING	1
49	200.009	0	ROTOR ASSEMBLY WITH FAN	1
50	1.60.142	0	SCREW	2
51	1.60.382	0	TOOTHED WASHER	2
52	1.40.016	0	STATOR STACK	1
53	1.60.003	2	BEARING	1
54	1.60.324	1	ADJUSTING RING	2
55	1.30.034	3	MOTOR COVER	1
56	1.10.811	1	WASHER	2
57	1 60 207	0	NUT	2
58	1.50.1936	1	BRUSH HOLDER KIT	2
59	1.30.005	0	MOTOR BRUSH	2
60	1.50.1391	0	BRUSH COVER ASSEMBLY	2
61	1.40.147	0	SWITCH	1
62	1.40.002	0	ANTI-DISTURBANCE FILTER	1
63	1.30.020	0	PLASTIC CABLE CLAMP	1
64	1.60.129	2	SELF-TAPPING SCREW	2
65	1.50.1387	0	HALF-SHELL ASSEMBLY WITH SCREWS	1
66	1.60.147	1	SELF-TAPPING SCREW	4
67	1.30.021	0	CABLE HOLDER	1
68	1.40.012	1	CABLE WITH PLUG	1

NOTES

EDILGRAPPA Srl

MACHINES AND EQUIPMENT FOR THE BUILDING TRADE, INDUSTRY AND RESCUE

31030 BORSO DEL GRAPPA (TV) - ITALY - Via Callesello, 4
Tel. 0423 910122 – Fax 0423 542122

E-mail: cut@edilgrappa.com <http://www.edilgrappa.com>