

2

MANUAL

EDILGRAPPA

**SINGLE-ACTING
INTERCHANGEABLE HEAD
P22
SPARE PARTS**

INDEX	
0 SPARE PARTS AND ACCESSORIES CATALOGUE.....	3
0.01 ORDERING INFORMATION.....	3
0.02 MECHANICAL COMPONENTS.....	3
COMPONENTS OF P22 BENDING HEAD P/N 150.01915	4

0 SPARE PARTS AND ACCESSORIES CATALOGUE



THE COMPANY DECLINES ALL LIABILITY FOR INJURY TO PEOPLE OR DAMAGE TO PROPERTY IF TECHNICAL ASSISTANCE IS NOT PERFORMED BY QUALIFIED AND AUTHORISED STAFF.



FOR TECHNICAL ASSISTANCE AND MAINTENANCE, CONTACT AN AUTHORISED SERVICE CENTRE OR WRITE TO cut@edilgrappa.com.

0.01 ORDERING INFORMATION

Orders for spare parts must be accompanied by the following information:

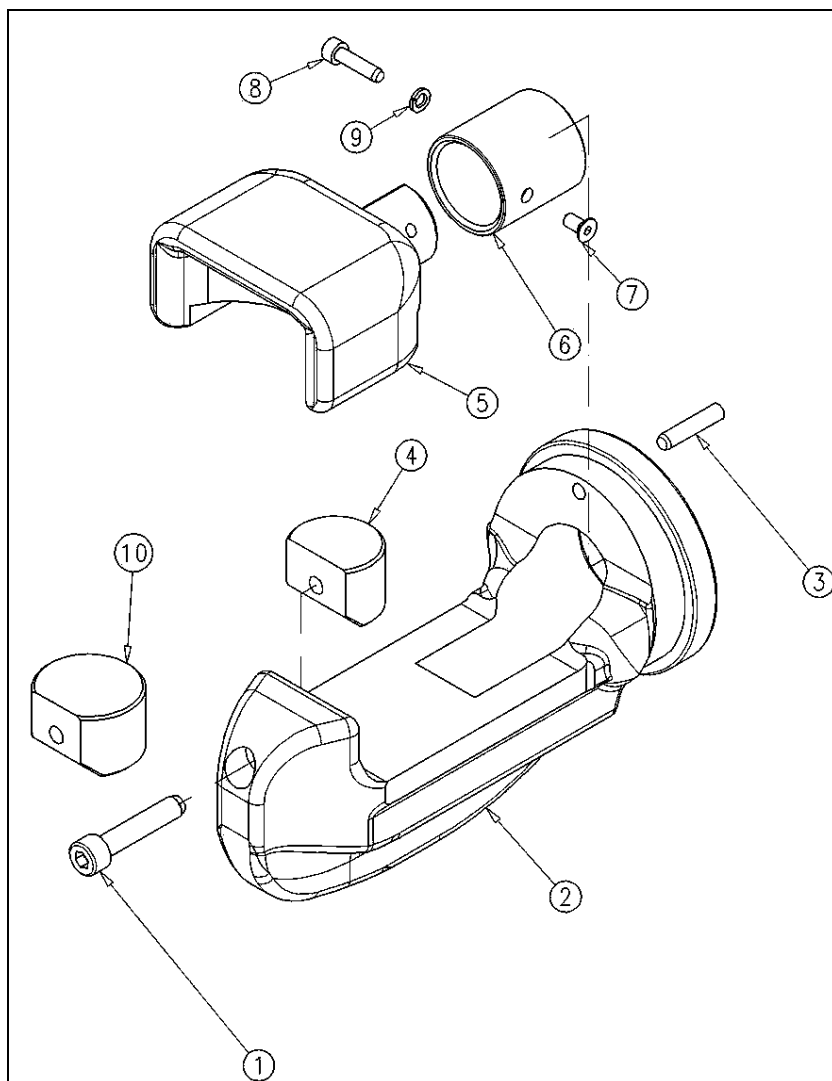
1. Type of equipment
2. Serial number indicated on CE plate (see MU22N machine body manual)
3. Part number or position in exploded drawing
4. Quantity
5. Revision status indicated on the back cover of the manual.

The Manufacturer can only supply the appropriate spare part if the required data is complete, since subsequent improvements may have entailed structural variations to the equipment and therefore to the spare parts.

0.02 MECHANICAL COMPONENTS

The following page contains an exploded diagram of the head, complete with codes, descriptions and quantities of each component

COMPONENTS OF P22 BENDING HEAD P/N 150.01915



COMPONENTS OF P22 BENDING HEAD P/N 150.01915

#	P/N	ITEM	Q.TY
1	160.00718	SCREW	1
2	110.04395	INTERCHANGEABLE HEAD	1
3	110.00185	CYLINDRICAL PIN	1
4	110.00058	SMALL CAM FOR BENDING UP TO A MAXIMUM DIAMETER OF 22mm	1
5	110.00056	SLIDING DIE	1
6	110.04386	BUSH	1
7	160.00817	SCREW	1
8	160.00105	SCREW	1
9	160.00314	WASHER	1
10	110.00057	LARGE CAM FOR BENDING UP TO A MAXIMUM DIAMETER OF 14 mm	1

NOTES

NOTES

EDILGRAPPA Srl
**MACHINES AND EQUIPMENT FOR THE BUILDING TRADE, INDUSTRY
AND RESCUE**

31030 BORSO DEL GRAPPA (TV) - ITALY - Via Callesello, 4
Tel. 0423 910122 – Fax 0423 542122

E-mail: cut@edilgrappa.com [http: //www.edilgrappa.com](http://www.edilgrappa.com)