

MANUAL

EDILGRAPPA

**BENDING-STRAIGHTENING TOOL
PR16-32N WITH ADJUSTABLE HEAD
SPARE PARTS**

INDEX

0 SPARE PARTS AND ACCESSORIES CATALOGUE.....3
 0.01 ORDERING INFORMATION..... 3
 0.02 MECHANICAL AND ELECTRICAL COMPONENTS 3
COMPONENTS OF BENDING-STRAIGHTENING TOOL PR16-32N
WITH ADJUSTABLE HEAD 230V P/N 150.02904.....4

0 SPARE PARTS AND ACCESSORIES CATALOGUE



THE COMPANY DECLINES ALL LIABILITY FOR INJURY TO PEOPLE OR DAMAGE TO PROPERTY IF TECHNICAL ASSISTANCE IS NOT PERFORMED BY QUALIFIED AND AUTHORISED STAFF.



FOR TECHNICAL ASSISTANCE AND MAINTENANCE, CONTACT AN AUTHORISED SERVICE CENTRE OR WRITE TO cut@edilgrappa.com.

0.01 ORDERING INFORMATION

For technical assistance and spare parts, both during and after the period of warranty, quote the data indicated on the ID plates and the serial number punched on the tool body (fig. 1)



Fig.1

Orders for spare parts must be accompanied by the following information:

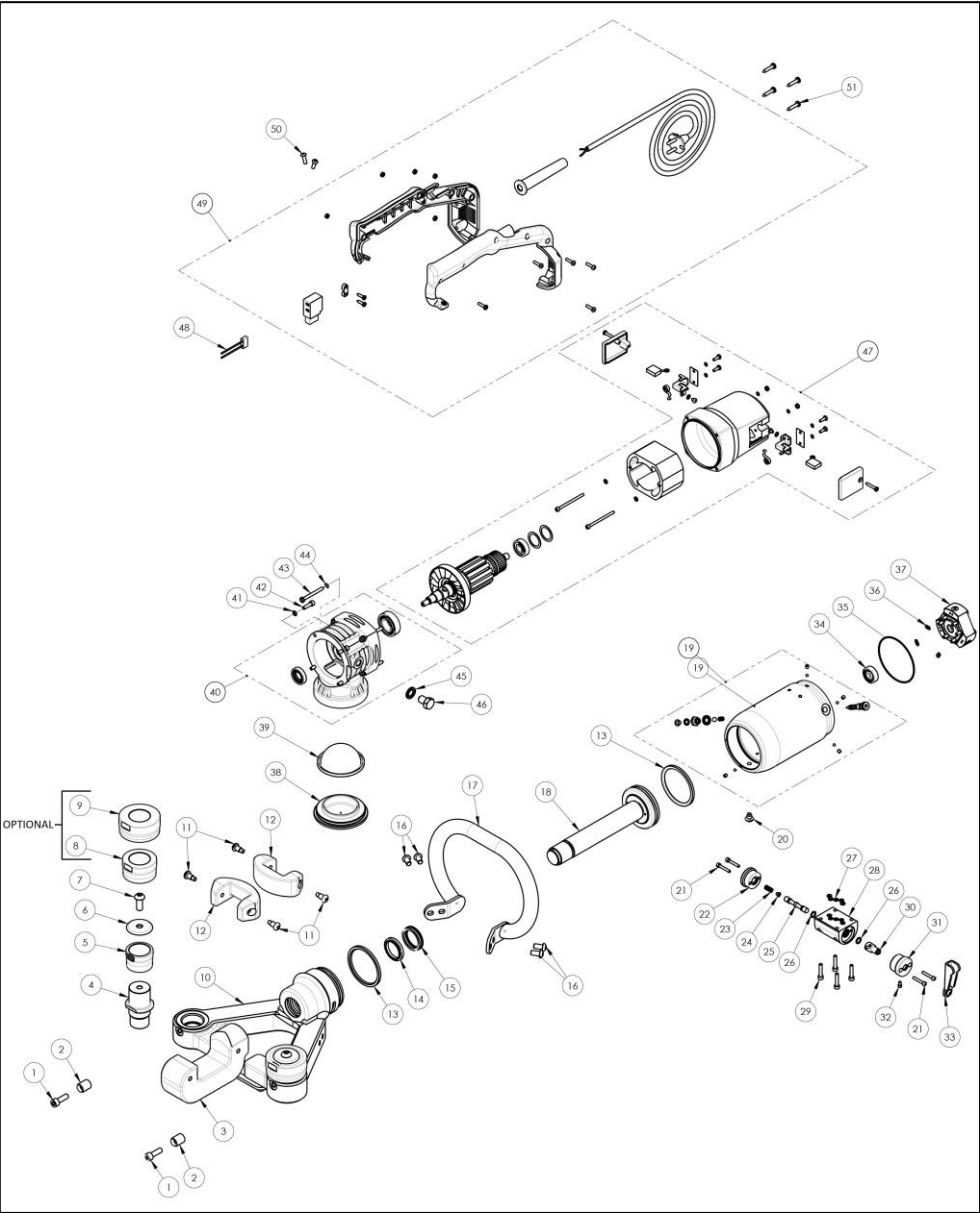
1. Type of equipment
2. Serial number
3. Part number or position in exploded drawing
4. Quantity
5. Revision status indicated on the back cover of the manual.

The Manufacturer can only supply the appropriate spare part if the required data is complete, since subsequent improvements may have entailed structural variations to the equipment and therefore to the spare parts.

0.02 MECHANICAL AND ELECTRICAL COMPONENTS

The following page contains an exploded diagram of the machine, complete with the part numbers, descriptions and quantities of each component

COMPONENTS OF BENDING-STRAIGHTENING TOOL PR16-32N WITH
ADJUSTABLE HEAD 230V P/N 150.02904



**COMPONENTS OF BENDING-STRAIGHTENING TOOL PR16-32N WITH
ADJUSTABLE HEAD 230V P/N 150.02904**

#	P/N	DESCRIPTION	Q.TY
1	160.00120	SCREW	2
2	110.07012	BAR SUPPORT	2
3	110.06976	CAM SUPPORT	1
4	110.05114	ROLL SUPPORT	2
5	110.06994	ROLL FOR BAR D.28-35	2
6	110.05126	ROLL LOCK DISC	2
7	160.00945	SCREW	2
8	110.06995	ROLL FOR BAR D.22/26 (OPTIONAL)	2
9	110.06996	ROLL FOR BAR D.16/20 (OPTIONAL)	2
10	150.02917	WELD ASSEMBLY HEAD	1
11	110.04073	SCREW	4
12	110.06977	CAM	2
13	130.00468	SEAL	2
14	130.00623	SCRAPER RAD	1
15	130.00485	SEAL	1
16	160.00931	SCREW	4
17	150.02921	HANDLE ASSEMBLY	1
18	150.03615	PISTON ASSEMBLY	1
19	150.03608	CYLINDER ASSEMBLY	1
20	110.06997	SCREW	1
21	160.00793	SCREW	4
22	110.01458	BLIND CAP FOR SPRING	1
23	110.00194	SPRING	1
24	110.00102	RIVET	1
25	110.01381	CONTROL VALVE SPOOL	1
26	130.00242	QUAD RING SEAL	2
27	130.00102	O-RING	5
28	150.02638	CONTROL VALVE ASSEMBLY	1
29	160.00119	SCREW	4

#	P/N	DESCRIPTION	Q.TY
30	110.01446	PIN FOR VALVE MOTION SLIDER	1
31	110.01457	PIERCED CAP FOR SLIDER PIN	1
32	110.01552	LOCKING SCREW	1
33	150.01933	LEVER ASS.Y	1
34	160.01023	BALL BEARING	1
35	130.00666	O-RING	1
36	130.00017	O-RING	3
37	150.03179	PUMP ASSEMBLY	1
38	110.07027	DIAPHRAGM CAP	1
39	130.00276	DIAPHRAGM	1
40	200.00008	OIL RESERVOIR ASSEMBLY	1
41	160.00410	WASHER	4
42	160.03021	SCREW	4
43	160.00151	SELF THREADED BOLT	4
44	160.00314	WASHER	4
45	160.00337	WASHER	1
46	150.00506	MAGNETIC FILTER CAP	1
47	150.00180	ELETCTRIC MOTOR ASSEMBLY	1
48	140.00002	NOISE FILTER	1
49	200.00028	HANDLE ASSEMBLY	1
50	160.00940	SCREW	2
51	160.00147	SCREW	4

NOTES

EDILGRAPPA Srl
**MACHINES AND EQUIPMENT FOR THE BUILDING TRADE,
INDUSTRY AND RESCUE**

31030 BORSO DEL GRAPPA (TV) - ITALY - Via Callesello, 4
Tel. 0423 910122

E-mail: cut@edilgrappa.com <http://www.edilgrappa.com>