



CARAT

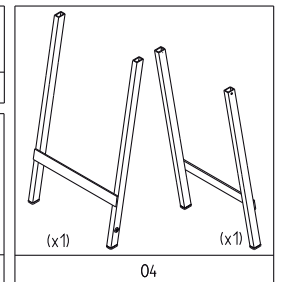
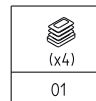
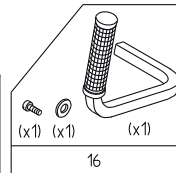
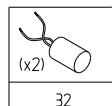
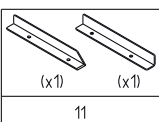
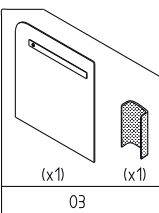
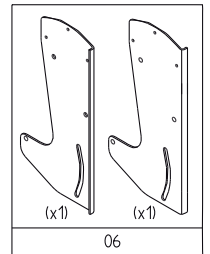
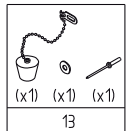
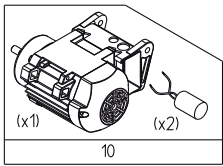
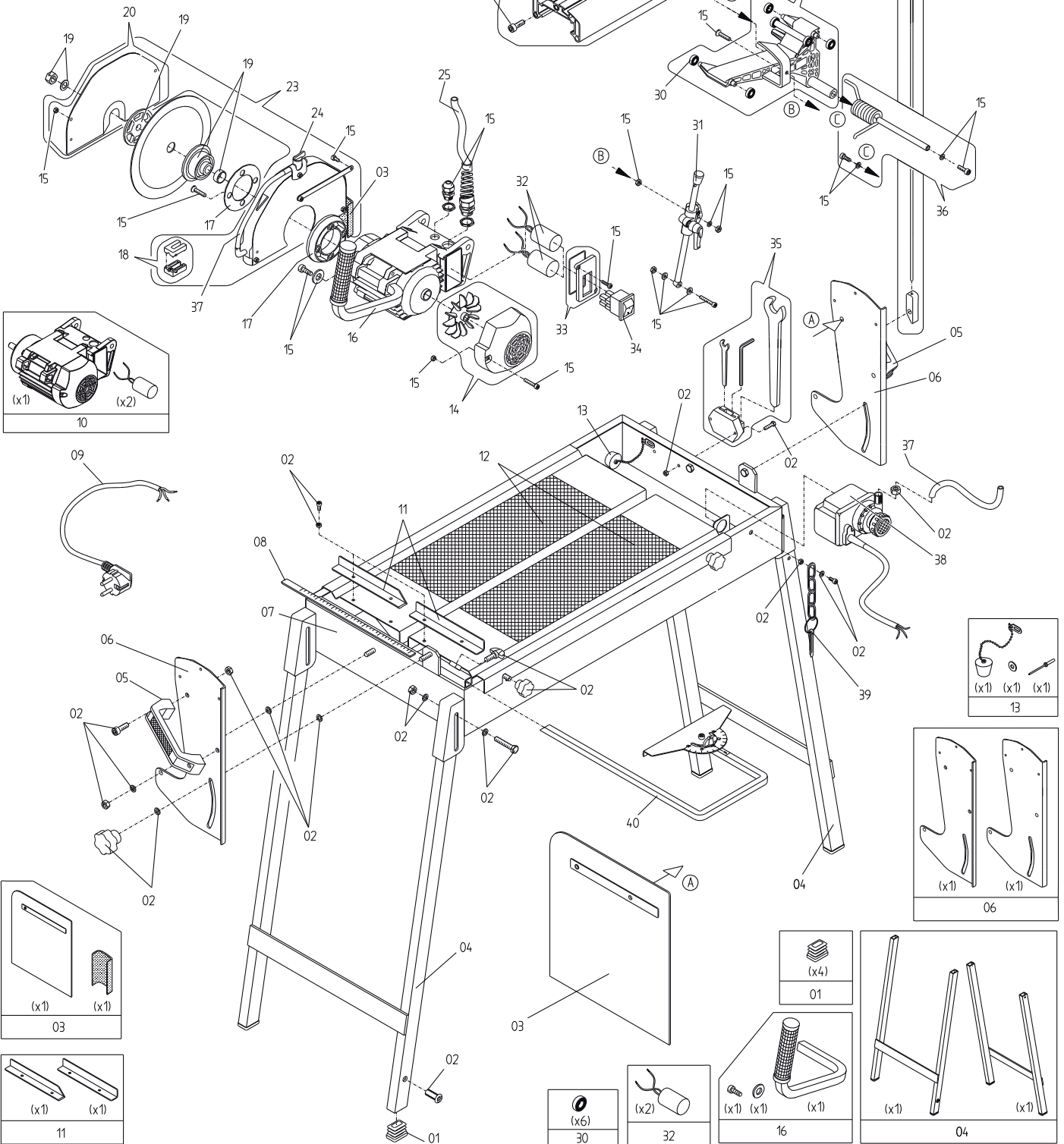
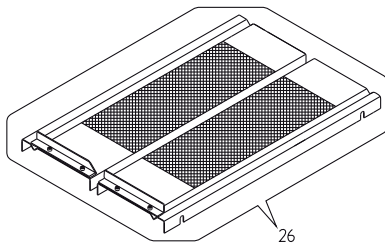
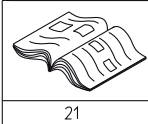
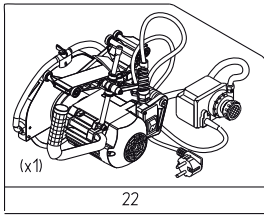
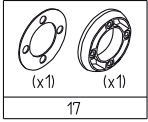
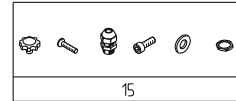
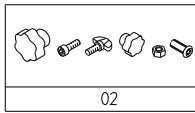
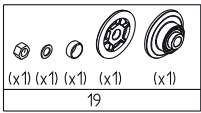
CARACOUP 265

ART. NR:

BUK2650000

DATUM:

01/01/2012



CARACOU 265

POS.	OMSCHRIJVING	ONDERDEELNR
1	KUNSTSTOF DOPPENSET TBV POTEN	XSPC85005200
2	SCHROEVEN/MOERENSET TBV FRAME	XSPC85060000
3	SET SPATLAPPEN	XSPC85007700
4	ONDERSTEL COMPL.	XSPC85003000
5	KUNSTSTOF HANDGREEP	XSPC03055000
6	SET BRUGSTEUNEN	XSPC85000400
7	WATERBAK-CHASSIS	XSPC85000200
8	SET LINIALEN	XSPC85003800
9	AANSLUITSNOER 230V	XSPC88071000
10	MOTOR COMPL. 230V	XSPC85007000
11	SET VOORAANSLAGEN	XSPC85000700
12	SET RUBBER MATTEN	XSPC39026000
13	WATERSTOP COMPL.	XSPC84025000
14	VENTILATOR + KAP	XSPC85002400
15	SCHROEVEN/MOERENSET TBV ZAAGWAGEN	XSPC85007100
16	HANDGREEP ZAAGWAGEN COMPL.	XSPC85003300
17	SET MONTAGERINGEN TBV ZAAGKAP	XSPC85002000
18	SPROEIVORK COMPL.	XSPC85002100
19	FLENZENSET COMPL.	XSPC81807-20
20	PLAAT ZAAGKAP COMPL. Ø200MM	XSPC85001100
21	HANDLEIDING	XSPC85008400
22	ZAAGWAGEN COMPL.	XSPC85005000
23	ZAAGKAP COMPL. Ø200MM	XSPC850022C0
24	WATERKRAAN COMPL.	XSPC85005400
25	WATERSLANG	XSPC07071T00
26	ZAAGTAFEL COMPL.	XSPC85000500
27	BRUG COMPL.	XSPC85000100
28	KABELANTENNE	XSPC90251000
29	CHASSIS ZAAGWAGEN COMPL.	XSPC85009300
30	SET LAGERS	XSPC850080S0
31	HOOGTE-INSTELLING COMPL.	XSPC850045C0
32	CONDENSATORSET 9Mf	XSPC85007-11
33	MONTAGEPLAATJE COMPL.	XSPC85002500
34	SCHAKELAAR 230V	XSPC90080000
35	GEREEDSCHAPSSET COMPL.	XSPC85007300
36	VEER TBV HOOGTE-INSTELLING COMPL.	XSPC85003900
37	WATERSLANG	XSPC85006500
38	WATERPOMP TYPE P-0	XWPE010000
39	ONDERSTELBLOKKERING	XSPC85502800
40	VARIABELE MATERIAALAANSLAG COMPL.	XSPC85000800